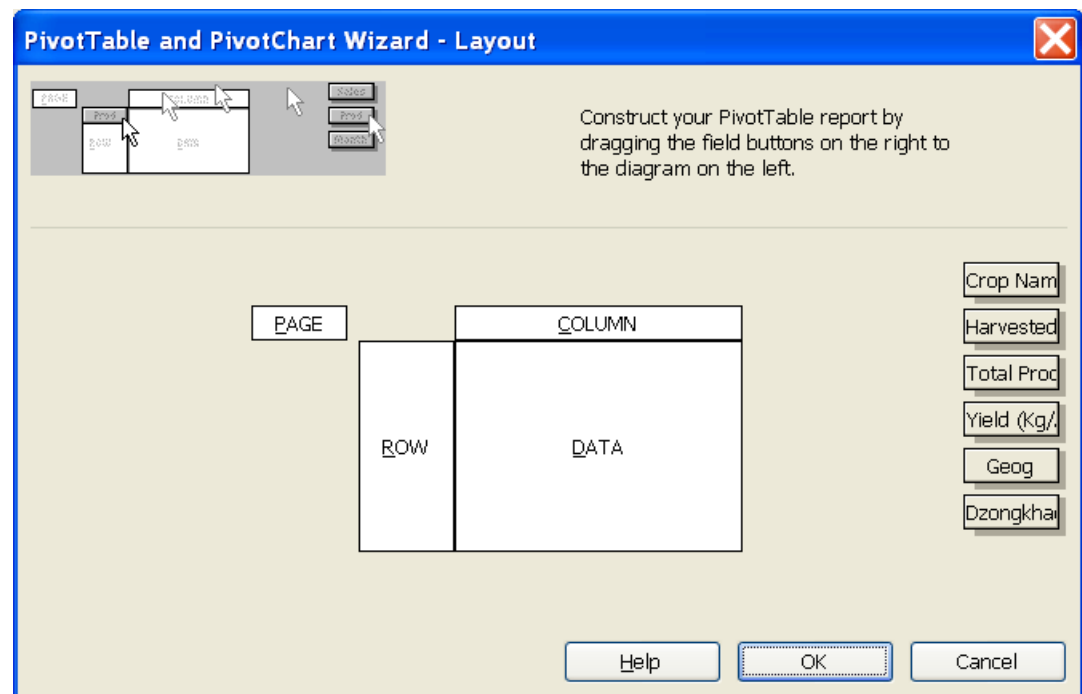


Excel's Pivot Table

Options

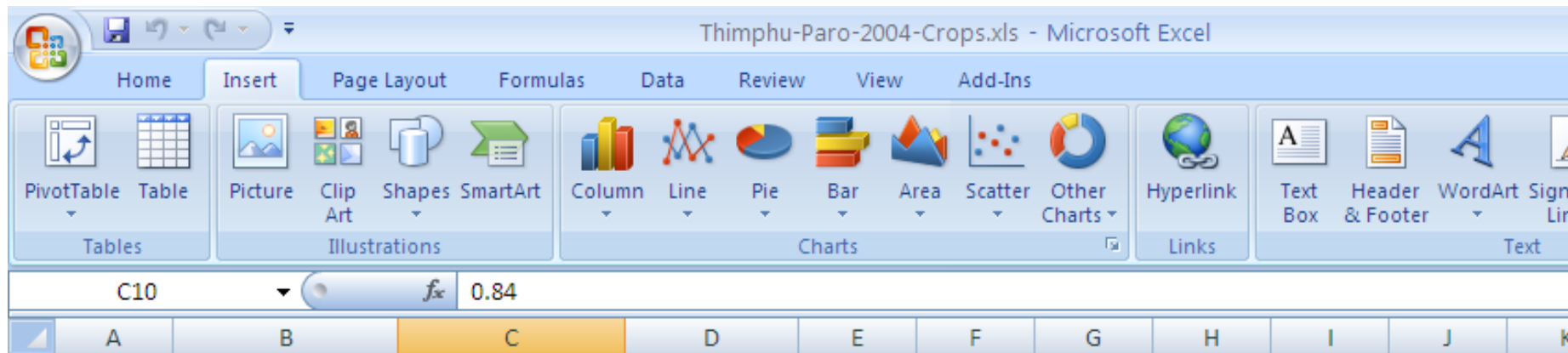
Multiple dimensions

Counts and %



Excel 2007: Where is the Pivot Table?

Insert > Tables > PivotTable



Excel 2007: Slightly different layout of pivot table

The screenshot displays the Microsoft Excel 2007 interface. The title bar shows the file name "Thimphu-Paro-2004-Crops.xls - Microsoft Excel". The ribbon is set to "PivotTable Tools" with the "Options" tab selected. The ribbon includes groups for "PivotTable", "Active Field", "Group", "Sort", "Data", "Actions", "Tools", and "Show/Hide".

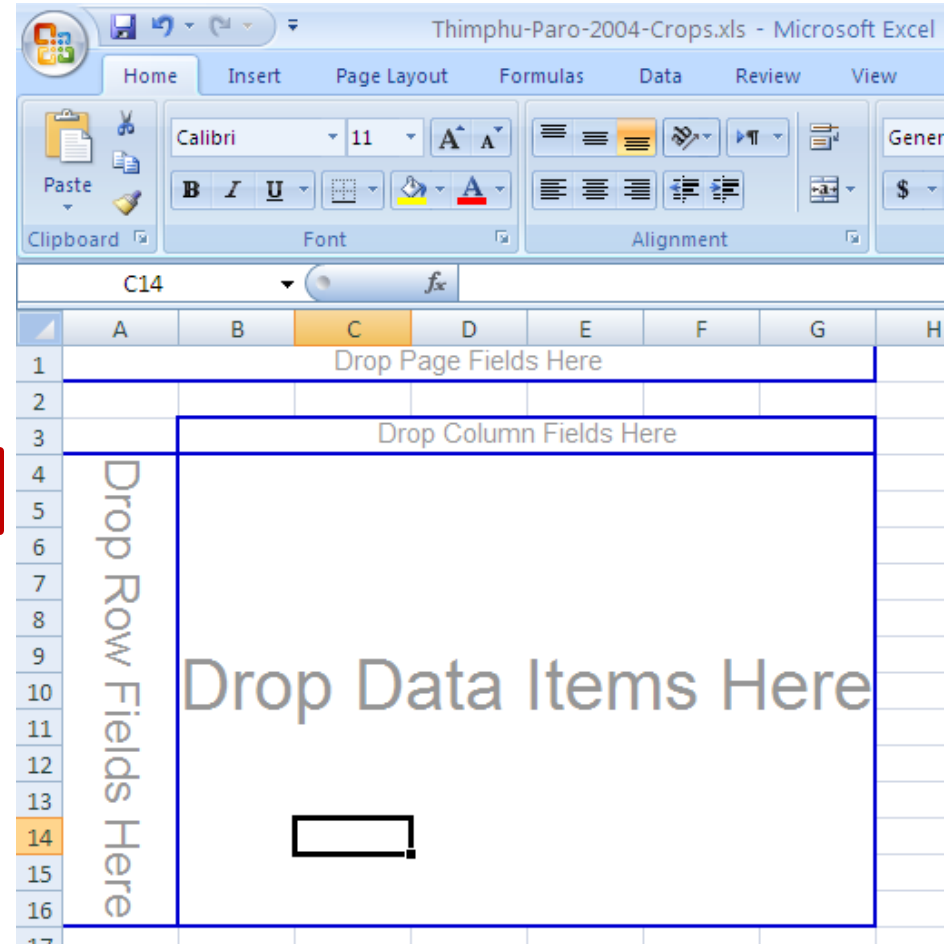
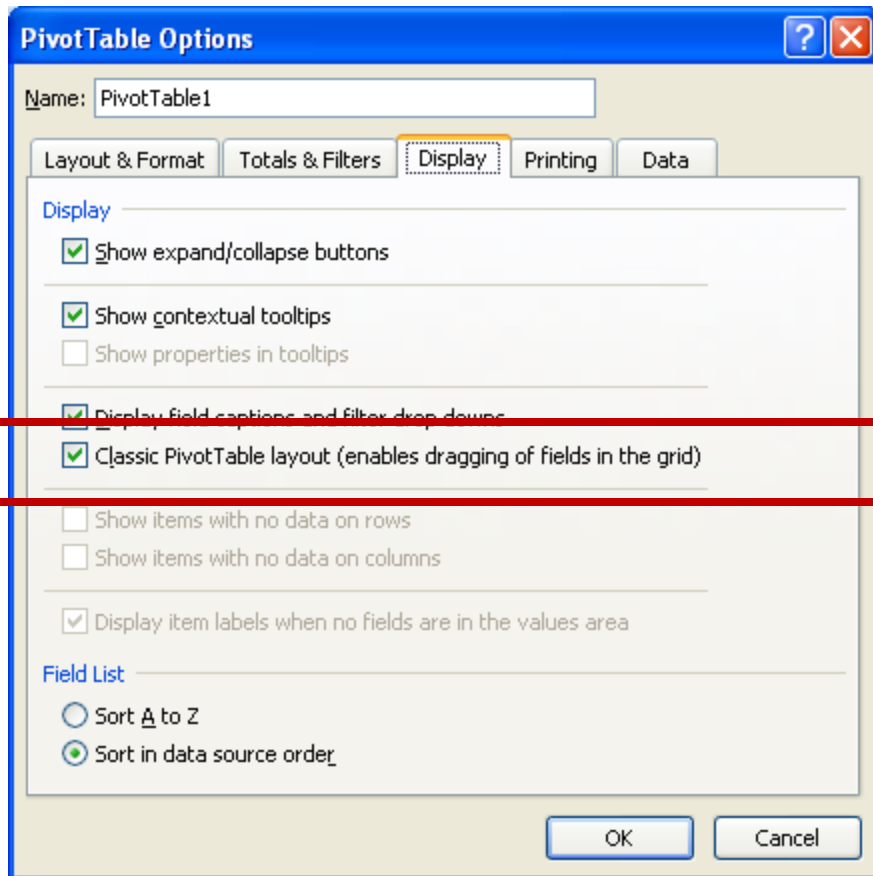
The main workspace shows a PivotTable named "PivotTable1" in cell A3. The PivotTable is currently empty, with the text "To build a report, choose fields from the PivotTable Field List" displayed in the cells. A callout box highlights the PivotTable area.

The "PivotTable Field List" task pane is open on the right side. It contains the following sections:

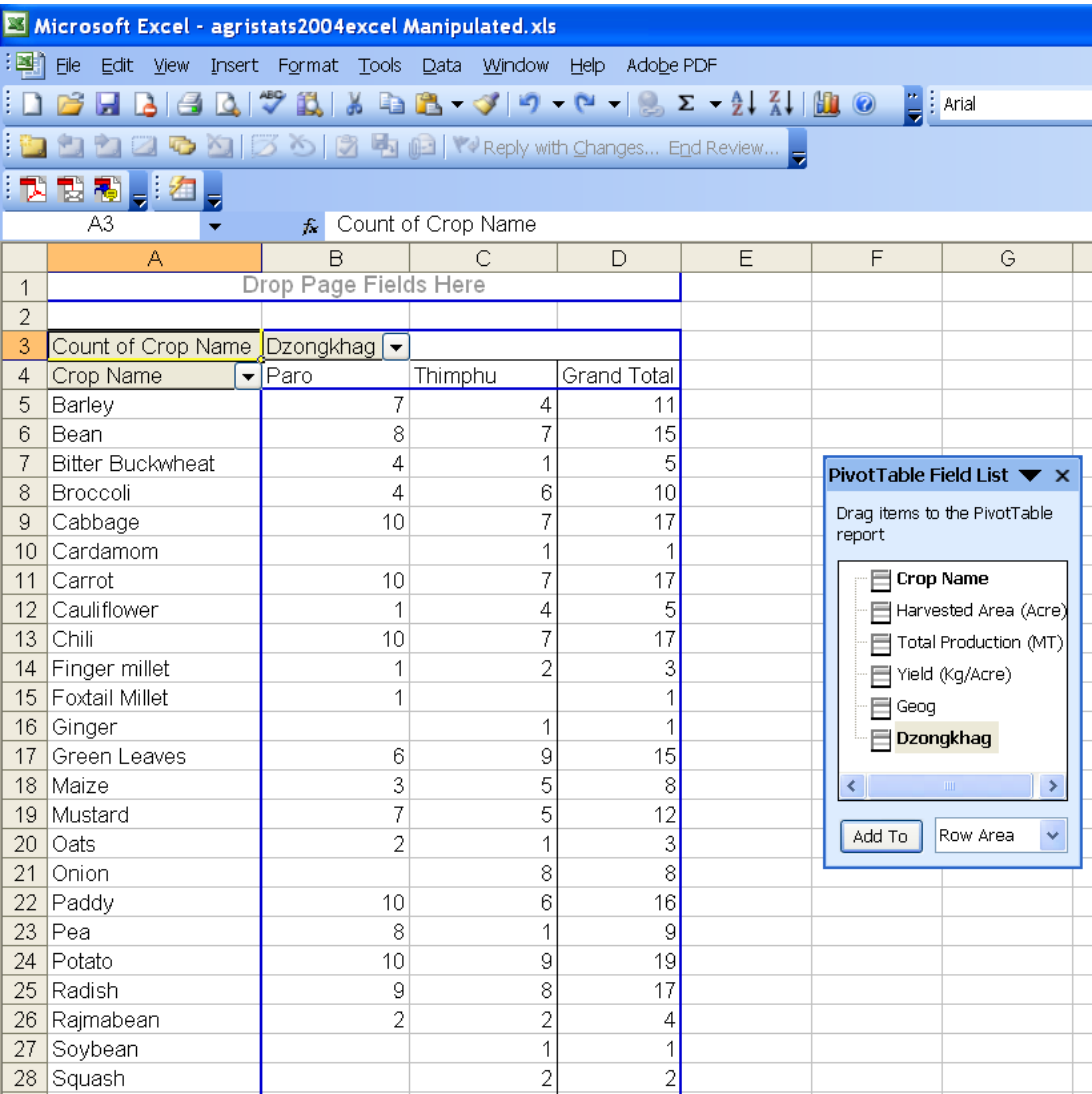
- Choose fields to add to report:** A list of fields with checkboxes:
 - Crop Name
 - Harvested Area (Acre)
 - Total Production (MT)
 - Yield (Kg/Acre)
 - Geog
 - Dzongkhag
- Drag fields between areas below:** Four empty boxes for organizing fields:
 - Report Filter
 - Column Labels
 - Row Labels
 - Values
- Defer Layout Update
- Update

Excel 2007: How to get “classic” layout?

Right-click on table >
Pivot Table Options



Distribution of crop types



Microsoft Excel - agristats2004excel Manipulated.xls

File Edit View Insert Format Tools Data Window Help Adobe PDF

Count of Crop Name

	A	B	C	D	E	F	G
1	Drop Page Fields Here						
2							
3	Count of Crop Name	Dzongkhag					
4	Crop Name	Paro	Thimphu	Grand Total			
5	Barley	7	4	11			
6	Bean	8	7	15			
7	Bitter Buckwheat	4	1	5			
8	Broccoli	4	6	10			
9	Cabbage	10	7	17			
10	Cardamom		1	1			
11	Carrot	10	7	17			
12	Cauliflower	1	4	5			
13	Chili	10	7	17			
14	Finger millet	1	2	3			
15	Foxtail Millet	1		1			
16	Ginger		1	1			
17	Green Leaves	6	9	15			
18	Maize	3	5	8			
19	Mustard	7	5	12			
20	Oats	2	1	3			
21	Onion		8	8			
22	Paddy	10	6	16			
23	Pea	8	1	9			
24	Potato	10	9	19			
25	Radish	9	8	17			
26	Rajmabean	2	2	4			
27	Soybean		1	1			
28	Squash		2	2			

PivotTable Field List

Drag items to the PivotTable report

- Crop Name
- Harvested Area (Acre)
- Total Production (MT)
- Yield (Kg/Acre)
- Geog
- Dzongkhag

Add To Row Area

Number of Geogs
growing each type
of crop

Thimphu vs. Paro

Distribution of crop types

Q: What is the “most popular” crop in Paro? Thimphu?

% of Geogs growing each type of crop

Thimphu vs. Paro

Double-click top left cell of Pivot Table

